

## Installation Guide for Chevrolet Corvette C8 Z06

PN 140957



### CAUTION!

This system includes heat shielding parts made from woven fiber that may pose a risk of injury when handling. Please wear protective equipment and use caution when handling heat shields.

\*\*\*\*\* Please compare the parts in the box with the bill of materials provided \*\*\*\*\*  
to assure that you have all the parts necessary for this installation.

These instructions have been written to help you with the installation of your Borla Performance exhaust system. Please read this document completely before beginning the installation of your system.

To ensure this part number fits your specific model year, please visit our website for the latest model year listings at [www.BORLA.com](http://www.BORLA.com)

Thank you for purchasing a Borla Performance Cat-Back™ exhaust system.

Borla Performance Cat-Back™ exhaust system PN 140957 is designed for the Chevrolet Corvette Z06, equipped with a 5.5L naturally-aspirated V8 engine and RWD automatic transmission.

Borla Performance Industries recommends that an exhaust shop or professional after market parts installer, who has all the necessary equipment, tools and experienced personnel needed for proper installation, should perform the installation of this system. However, if you decide to perform the installation, we recommend someone should help you. Ensure the installer uses all under car safety precautions including eye protection.

*Please take time to read and understand the following...*

By installing your Borla Performance exhaust system, you indicate that you have read this document and you agree with the terms stated below.

It is the responsibility of the purchaser to follow all installation instruction guidelines and safety procedures supplied with your Borla Performance exhaust system.

Borla Performance Industries assumes no responsibility for damages occurring from misuse, abuse, improper installation, improper operation, lack of responsible care, or all previously stated reasons resulting from incompatibility with other manufacturer's products and/or systems.

Included with your Borla Performance exhaust system is a warranty card. Please read it carefully before you begin any work on your vehicle. If you should have any questions regarding our warranty policy, installation, or any other matter pertaining to your new Borla Performance exhaust system, please give us a call at the number provided on the warranty card.

**Minimum Required Tool List:**

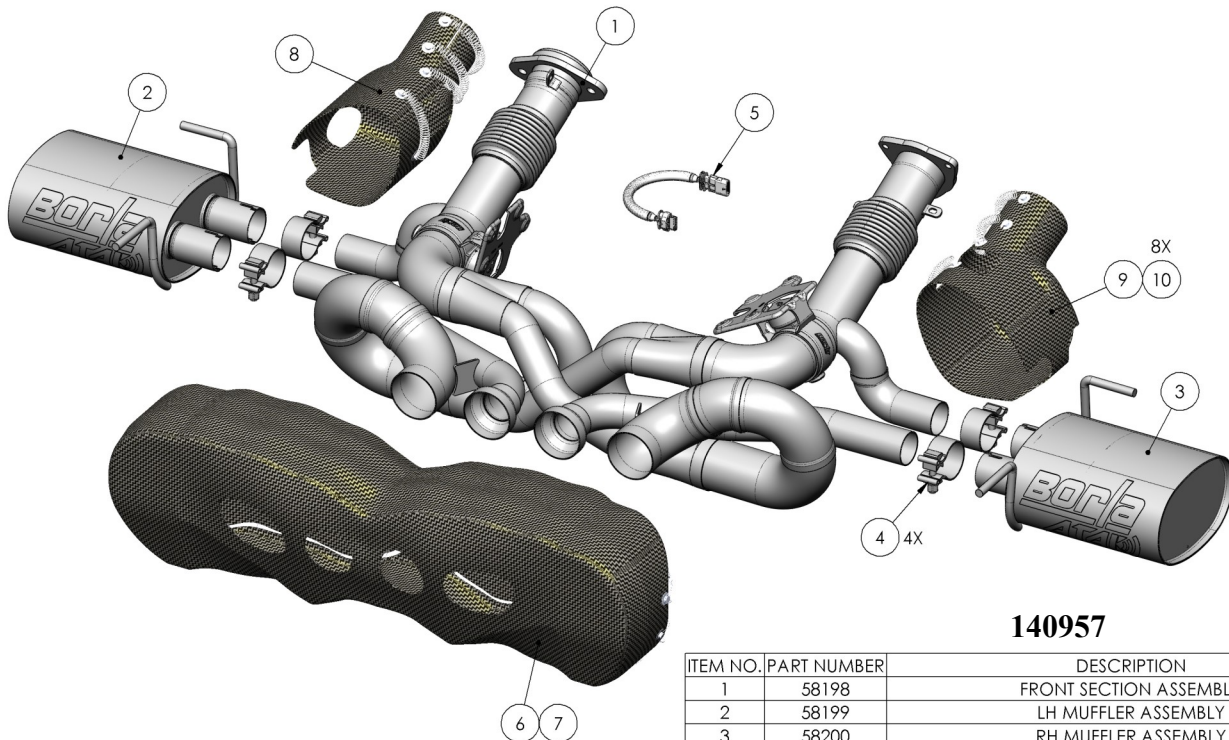
**TOOLS:**

- |                                 |                    |
|---------------------------------|--------------------|
| 1. 3/8" drive ratchet           | 8. 7mm socket      |
| 2. 3/8" drive extension 6"      | 9. 13mm wrench     |
| 3. 3/8" drive extension 12" (2) | 10. 10mm wrench    |
| 4. 3/8" socket swivel           | 11. PL30 Pentalobe |
| 5. 15mm socket                  | 12. T15 Torx       |
| 6. 13mm socket                  |                    |
| 7. 10mm socket                  |                    |

**SHOP SUPPLIES:**

1. Spray lubricant

**Borla Performance—Bill of Materials**



**140957**

ITEM NO.	PART NUMBER	DESCRIPTION	QTY.
1	58198	FRONT SECTION ASSEMBLY	1
2	58199	LH MUFFLER ASSEMBLY	1
3	58200	RH MUFFLER ASSEMBLY	1
4	90115	S/S ACCUSEAL CLAMP Ø2.00	4
5	470726	EXTENSION HARNESS (OVERALL LENGTH: 12")	1
6	470847	CENTER HEAT SHIELD BLANKET	1
7	470850	RETAINING WIRE: Ø.040" X 10.00FT	1
8	470848	LH VALVE HEAT SHIELD BLANKET	1
9	470849	RH VALVE HEAT SHIELD BLANKET	1
10	470851	SPRING: Ø.34" X 3.20" LG., Ø.035" WIRE	8

**Caution!!!** *Never work on a hot exhaust system. Serious injury in the form of burns can result if the vehicle has been in use and the exhaust system is hot, allow vehicle to cool for at least 1 hour. Always wear eye protection when working under any vehicle.*

**Note:** *It is our recommendation that you use a hoist or hydraulic lift to facilitate the installation of your new Borla Performance Exhaust System.*

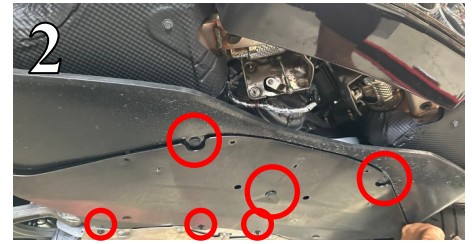
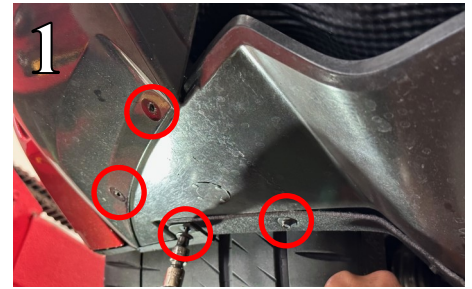
**Taking all under car safety precautions, lift the vehicle using a hoist or hydraulic lift. Once this has been done, you may begin the removal of your old exhaust system from your vehicle.**

**Note:** *Before removing the original exhaust system from your vehicle, please compare the parts you have received with the bill of materials provided on the previous page to assure that you have all the parts necessary for the installation of your new Borla Performance Exhaust System.*

**Note:** *With a used vehicle, we suggest a penetrating spray lubricant to be applied liberally to all exhaust fasteners and allowing a significant period of time for the chemical to lubricate the threads before attempting to disassemble.*

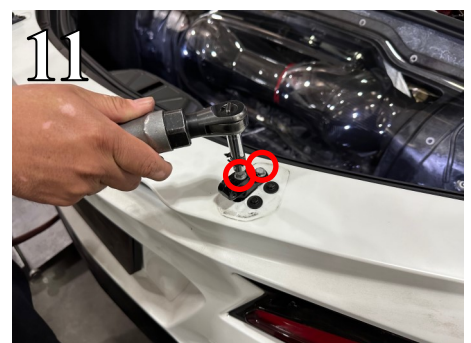
## Original Exhaust System Removal

1. Lubricate all hangers, rubber isolators, bolts and nuts.
2. Loosen and remove the hardware that attaches the undercar clamshell to the vehicle and remove the clamshell from the vehicle (Figs. 1-4). Save this hardware for reinstallation.
3. Loosen and remove the hardware that attaches the driver side fender inlet to the fender liner and remove the fender inlet from the vehicle (Figs. 5-6). Save this hardware for reinstallation.
4. Repeat Step 3 for the passenger side fender inlet.



## Original Exhaust System Removal Cont'd

5. Peel back the rear fender liners and loosen and remove the hardware behind them (Figs. 7-8). Save this hardware for reinstallation.
6. For vehicles equipped with the aero package, loosen and remove the hardware attaching the wing to the mounting points on top of the bumper cover and remove the wing from the vehicle (Figs. 9-10). Save this hardware for reinstallation.
7. For vehicles equipped with the aero package, loosen and remove the hardware that attaches the wing mounting points to the bumper cover (Fig. 11). Save this hardware for reinstallation.



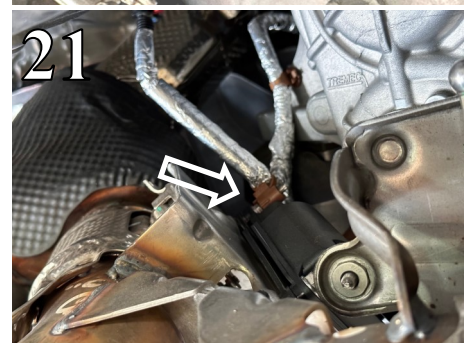
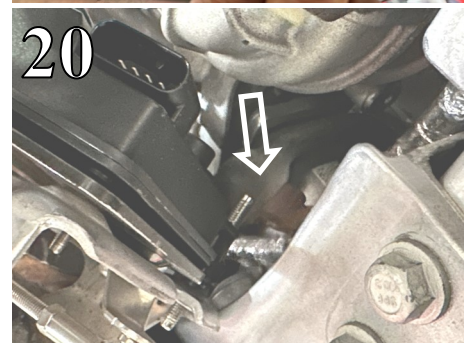
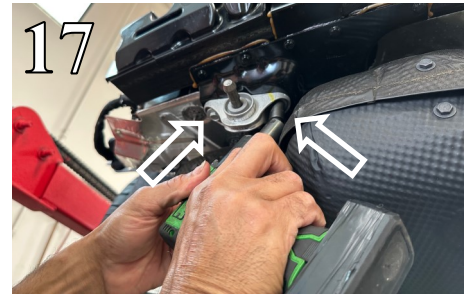
## Original Exhaust System Removal Cont'd

8. Loosen and remove the hardware that attaches the rear bumper cover to the vehicle (Fig. 12). Save this hardware for reinstallation.
9. Pay special attention to the position of the plastic spacers placed between the rear bumper cover and the top of the trunk to maintain alignment during reinstallation (Fig. 13).
10. Using a second person, lift the rear bumper cover up and away from the rear of the vehicle and disconnect the three electrical connectors before fully removing the rear bumper cover from the vehicle (Figs. 14-16).



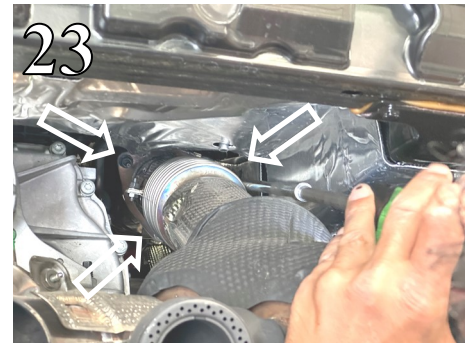
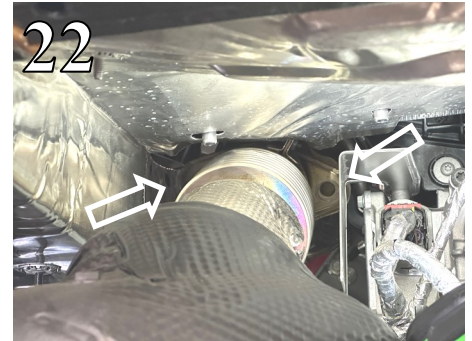
## Original Exhaust System Removal Cont'd

11. Loosen and remove the hardware connecting the rear rubber isolator assemblies to the vehicle (Figs. 17-18). Save this hardware for reinstallation.
12. Disconnect the electrical connectors attached to the valve actuators (Fig. 19).
13. Pull off the wire harness fastener from the top of the threaded stud on each of the valve actuators (Figs. 20-21).



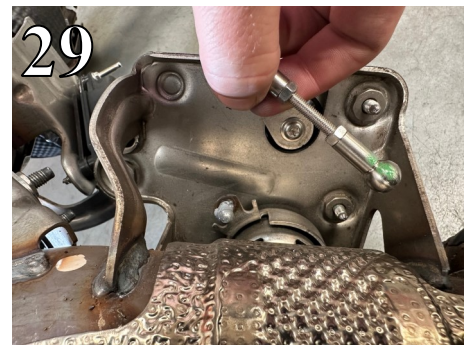
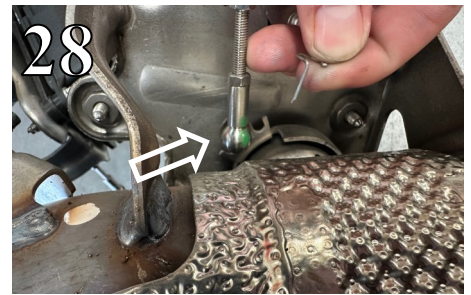
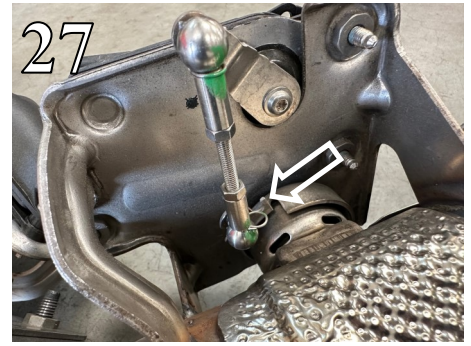
## Original Exhaust System Removal Cont'd

14. Loosen and remove the nuts on both the L/H and R/H front flanges (Figs. 22-23). Save this hardware for reinstallation.
15. Using a muffler stand or an additional person, hold the system in place and remove the rubber isolators from the vehicles hangers. Then remove the original exhaust system as a single piece (Figs. 24-26).
16. **Note: Inspect both gaskets on the flange ends to be reused on your Borla system. In testing we have found no issues with reusing these gaskets, and only recommend replacement if damage is present.**
17. Not shown: Remove these rubber isolators from the original exhaust system for installation of your Borla system.



## Original Exhaust System Removal Cont'd

18. Remove the clip securing the ball socket to the valve actuator ball end by rotating the folded end and pulling the clip out and away from the shaft (Figs. 27-28). Keep this clip for installation onto your Borla system.
19. Remove the ball socket from the valve actuator ball end (Fig. 29).
20. Loosen and remove the hardware attaching the valve actuators to the original exhaust system (Fig. 30). Keep the hardware and valve actuators for installation onto your Borla system.
21. Loosen and remove the hardware attaching the front pipe heatshields to the original exhaust (Fig. 31). Keep the hardware and heatshields for installation onto your Borla system.
22. Original exhaust system removed.



## Borla Performance Cat-Back™ Exhaust System Installation

### CAUTION!

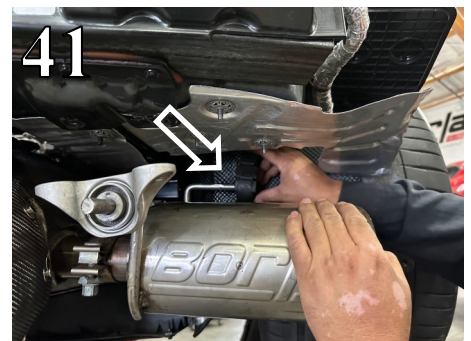
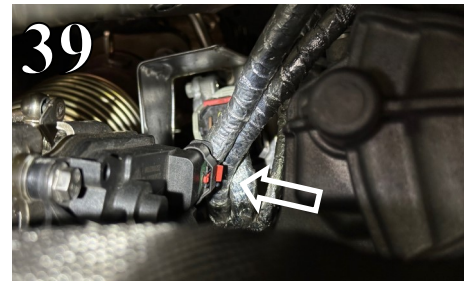
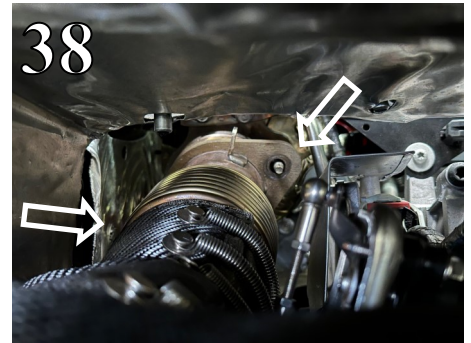
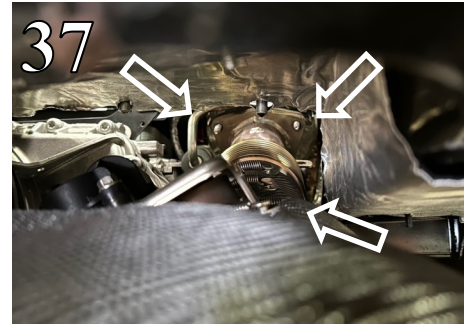
This system includes heat shielding parts made from woven fiber that may pose a risk of injury when handling. Please wear protective equipment and use caution when handling heat shields.



1. Orient components on shop floor according to Borla bill of materials drawing on page 2.
2. Attach the front pipe heat shields from the original exhaust system to your Borla system using the original hardware (Fig. 32).
3. Place your original valve actuators onto your Borla system and connect the valve actuator ball sockets to the Borla valve assemblies. Use the original clips to secure the valve actuator arms (Figs. 33-34).
4. Thread and tighten the original hardware attaching the valve actuators to your Borla system in the same positions found on your original exhaust system (Fig. 34).
5. Connect the **Extension Harness** to the original valve actuator electrical connector and feed it below the transmission (Fig. 35).
6. Lift the assembled **Front Section Assembly** into position on the vehicle with the original flange studs sticking through the flanges on your Borla system (Fig. 36).

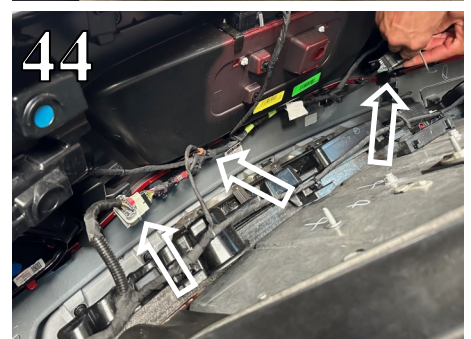
## Borla Performance Cat-Back™ Exhaust System Installation

7. Thread the original nuts onto the studs pointing out through the flanges on your Borla system (Figs. 37-38). Do not fully tighten these nuts yet.
8. Connect both the **Extension Harness** and original valve actuator electrical connector to their corresponding valve actuator and slide each locking clip into place (Fig. 39).
9. Not pictured: reinstall the wire harness fasteners onto their corresponding threaded studs.
10. Install both of the original rubber isolator assemblies onto the corresponding hangers of the **R/H Muffler Assembly**. Place a clamp over each expanded end of the **R/H Muffler Assembly** and insert the inlets to the **Front Section Assembly**. Insert the front original rubber isolator to the vehicle hanger (Figs. 40-41). Do not tighten the clamps.



## Borla Performance Cat-Back™ Exhaust System Installation

11. Using the original hardware, thread and tighten the original rubber isolator assembly to the vehicle (Fig. 42).
12. Repeat Steps 10-11 for installation of the **L/H Muffler Assembly**.
13. Start the vehicle and check for a check engine light (CEL). If a CEL is observed, refer to the valve troubleshooting sheet or call Borla customer service.
14. Fully tighten the nuts on the front flanges.
15. Tighten the Accuseal clamps to 32-35 ft. lbs.
16. Using a second person, lift the rear bumper cover up and onto the rear of the vehicle and reconnect the three electrical connectors (Figs. 43-44).
17. Place the original plastic spacers into their original positions and tighten the original hardware that connects the rear bumper cover to the vehicle (Figs. 45-46).



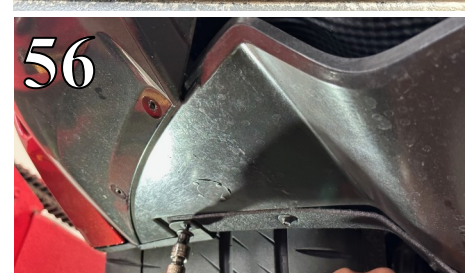
## Borla Performance Cat-Back™ Exhaust System Installation

18. For vehicles equipped with the aero package, reinstall the wing mounting points to the bumper cover using the original hardware (Fig. 47).
19. For vehicles equipped with the aero package, reinstall the wing to the mounting points on top of the bumper cover using the original hardware. (Figs. 48-49).
20. Reinstall the original hardware that connects the rear bumper cover to the vehicle (Fig. 50).
21. Put the fender liners back into position and install the original fender inlets to their corresponding sides (Figs. 51-52).



## Borla Performance Cat-Back™ Exhaust System Installation

22. Thread and tighten the original hardware that attaches the fender inlets to their corresponding fender liners (Fig. 53).
23. Install the original undercar clamshell to the vehicle using the original hardware (Figs. 54-57).
24. Before starting your vehicle, make sure to check all wires, hoses, brake lines, body parts and tires for safe clearance from the exhaust system.
25. Start the vehicle and check for any leaks. If any leaks are found, determine cause (such as loose or incorrectly positioned clamp) and repair as necessary.



**ATTENTION:** After installation, the exhaust valves should be re-calibrated according to GM Document ID 5406413. Borla Performance Industries recommends taking your car to the nearest Chevrolet dealer for exhaust valve re-calibration services. Failure to re-calibrate the valves may result in a check engine light and/or negatively impact valve longevity.

**WARNING:** Use extreme caution during installation. Torque all fasteners according to manufacturer's torque values and tightening sequence. **DO NOT** use air impact tools to tighten fasteners on Borla Performance Exhaust Systems. Use of such tools may result in bent flanges or gasket contact areas leading to exhaust leaks.

**NOTE:** When you first start your vehicle after the installation of your new Borla Performance Exhaust System, there may be some smoke and fumes coming from the system. This is a protective oil based coating used in the manufacturing of mandrel bent performance exhaust tubing. This is not a problem and will disappear within a very short period of time after the exhaust has reached normal operating temperatures.