

Installation Guide for Chevrolet Silverado/GMC Sierra 1500 6.2L

PNs 140990, 140991BC/CFBA, 140992, 140993, 140994BC/CFBA, 140995, 140996, 140997BC/CFBA, 140998, 141002, 141003, 141004, 60679, 60680, & 60706



******* Please compare the parts in the box with the bill of materials provided *****
to ensure that you have all the parts necessary for this installation.**

These instructions have been written to help you with the installation of your Borla Performance exhaust system. Please read this document completely before beginning the installation of your system.

To ensure this part number fits your specific model year, please visit our website for the latest model year listings at www.BORLA.com

Thank you for purchasing a Borla Performance Cat-Back™ exhaust system.

Borla Performance Cat-Back™ exhaust systems (PNs 140990, 140991BC/CFBA, 140992, 140993, 140994BC/CFBA, 140995, 140996, 140997BC/CFBA, and 140998) are designed for the Chevrolet Silverado/GMC Sierra 1500, equipped with a 6.2L V8 engine and 2WD or 4WD automatic transmission.

Borla Performance Cat-Back™ exhaust systems (PNs 141002, 141003, and 141004) are designed for the Chevrolet Silverado 1500 ZR2 / GMC Sierra 1500 AT4X, equipped with a 6.2L V8 engine and 4WD automatic transmission.

Note: PNs 60679 and 60680 are designed only to work with Borla Cat-Back™ PNs 140993, 140994BC/CFBA, 140995, 140996, 140997BC/CFBA, 140998, 141003, and 141004. These components are designed to change the sound level of your exhaust system between ATAΚ and S-Type. They are not compatible with Borla Touring™ Cat-Back system PNs 140990, 140991BC/CF, 140992, and 141002.

Borla Performance exhaust component PN 60706 is designed only to work with the above Borla Performance Cat-Back™ exhaust systems to adapt them to trucks with a Crew Cab, 6' 5" bed layout (157" wheelbase). It is not compatible with the stock exhaust.

Borla Performance Industries recommends that an exhaust shop or professional after market parts installer, who has all the necessary equipment, tools and experienced personnel needed for proper installation, should perform the installation of this system. However, if you decide to perform the installation, we recommend someone should help you. Ensure the installer uses all under car safety precautions including eye protection.

Please take time to read and understand the following...

By installing your Borla Performance exhaust system, you indicate that you have read this document and you agree with the terms stated below.

It is the responsibility of the purchaser to follow all installation instruction guidelines and safety procedures supplied with your Borla Performance Exhaust System.

Borla Performance Industries assumes no responsibility for damages occurring from misuse, abuse, improper installation, improper operation, lack of responsible care, or all previously stated reasons resulting from incompatibility with other manufacturer's products and/or systems.

Included with your Borla Performance exhaust system is a warranty card. Please read it carefully before you begin any work on your vehicle. If you should have any questions regarding our warranty policy, installation, or any other matter pertaining to your new Borla Performance exhaust system, please give us a call at the number provided on the warranty card.

Minimum Required Tool List:

TOOLS:

1. 3/8" drive ratchet
2. 3/8" drive extension 3"
3. 3/8" drive extension 3"
4. 15mm deep well socket
5. 13mm socket

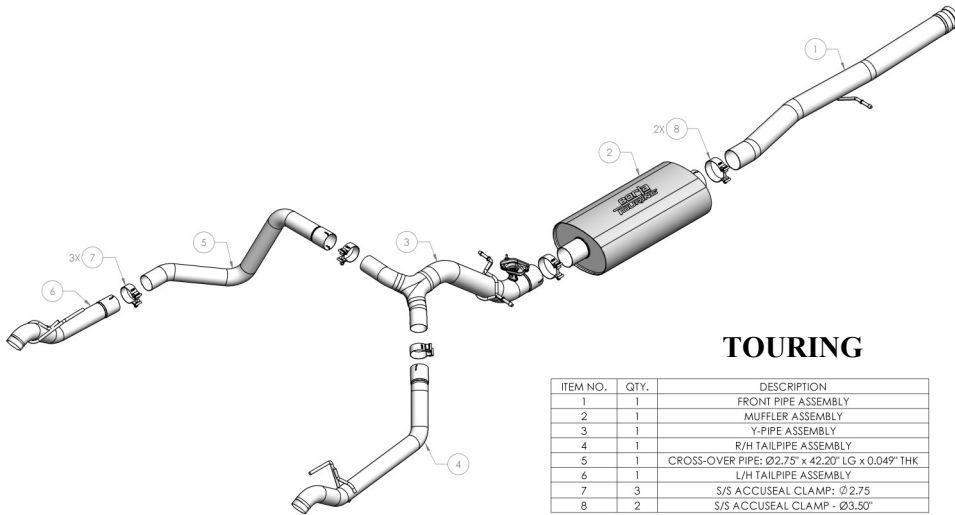
6. 10mm socket

7. Pry bar

SHOP SUPPLIES:

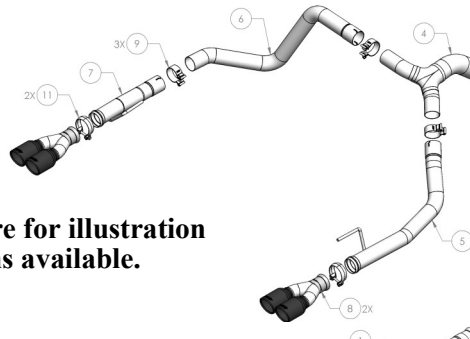
1. Spray lubricant

Borla Performance - Bill of Materials



TOURING

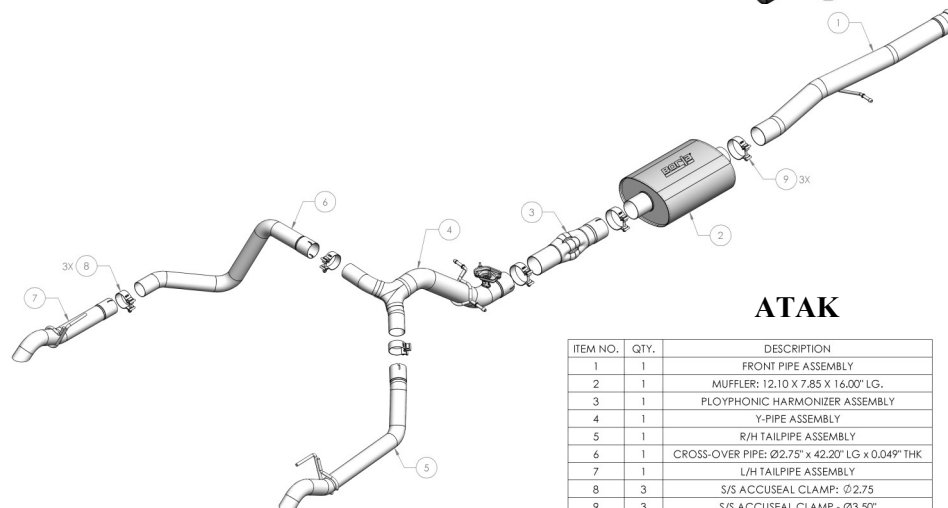
ITEM NO.	QTY.	DESCRIPTION
1	1	FRONT PIPE ASSEMBLY
2	1	MUFFLER ASSEMBLY
3	1	Y-PIPE ASSEMBLY
4	1	R/H TAILPIPE ASSEMBLY
5	1	CROSS-OVER PIPE: Ø2.75" x 42.20" LG x 0.049" THK
6	1	L/H TAILPIPE ASSEMBLY
7	3	S/S ACCUSEAL CLAMP: Ø2.75
8	2	S/S ACCUSEAL CLAMP - Ø3.50"



S-TYPE

ITEM NO.	QTY.	DESCRIPTION
1	1	FRONT PIPE ASSEMBLY
2	1	MUFFLER: 12.10 X 7.85 X 16.00" LG.
3	1	REAR MUFFLER: Ø6.25 X 10.00" LG.
4	1	Y-PIPE ASSEMBLY
5	1	R/H TAILPIPE ASSEMBLY
6	1	CROSS-OVER PIPE: Ø2.75" x 42.20" LG x 0.049" THK
7	1	L/H TAILPIPE ASSEMBLY
8	2	TIP ASSEMBLY
9	3	S/S ACCUSEAL CLAMP: Ø2.75
10	3	S/S ACCUSEAL CLAMP - Ø3.50"
11	2	CLAMP: HALF MOON, 304SS, 70mm, 2.75"

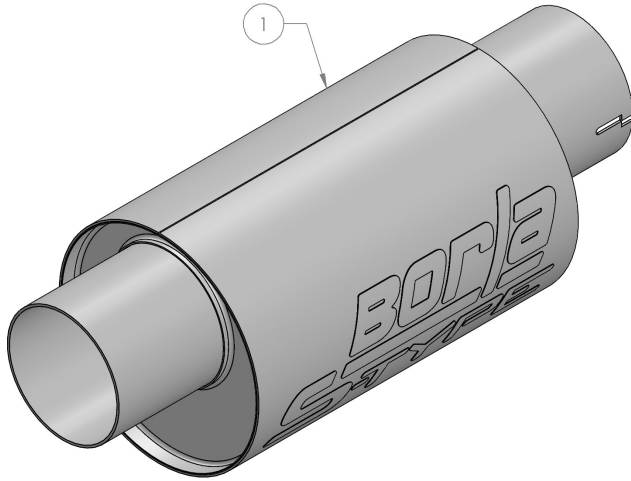
Differences in tailpipe / tip options are for illustration only and are not the only options available.



ATAK

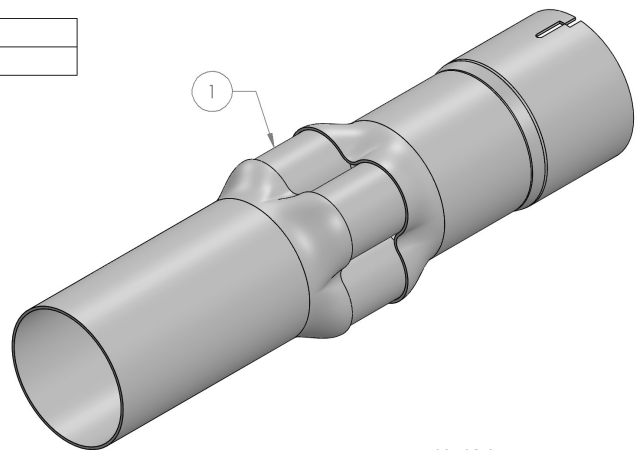
ITEM NO.	QTY.	DESCRIPTION
1	1	FRONT PIPE ASSEMBLY
2	1	MUFFLER: 12.10 X 7.85 X 16.00" LG.
3	1	PLOYPHONIC HARMONIZER ASSEMBLY
4	1	Y-PIPE ASSEMBLY
5	1	R/H TAILPIPE ASSEMBLY
6	1	CROSS-OVER PIPE: Ø2.75" x 42.20" LG x 0.049" THK
7	1	L/H TAILPIPE ASSEMBLY
8	3	S/S ACCUSEAL CLAMP: Ø2.75
9	3	S/S ACCUSEAL CLAMP - Ø3.50"

Borla Performance - Bill of Materials



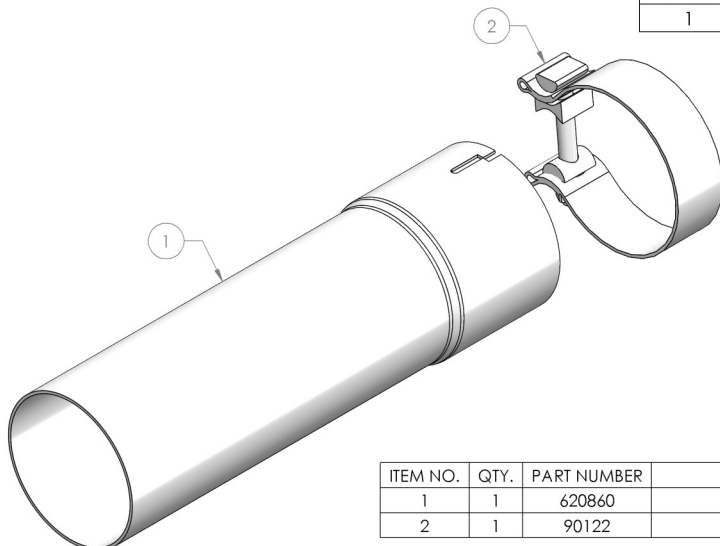
60679

ITEM NO.	QTY.	PART NUMBER	DESCRIPTION
1	1	401308	REAR MUFFLER:Ø6.25 X 10.00" LG.



60680

ITEM NO.	QTY.	PART NUMBER	DESCRIPTION
1	1	57022	POLYPHONIC HARMONIZER ASSEMBLY



60706

ITEM NO.	QTY.	PART NUMBER	DESCRIPTION
1	1	620860	EXTENSION PIPE:Ø3.50 X 12.00"
2	1	90122	S/S ACCUSEAL CLAMP Ø3.50

Caution!!! *Never work on a hot exhaust system. Serious injury in the form of burns can result. If the vehicle has been in use and the exhaust system is hot, allow vehicle to cool for at least 1 hour. Always wear eye protection when working under any vehicle.*

Note: *It is our recommendation that you use a hoist or hydraulic lift to facilitate the installation of your new Borla Performance Exhaust System.*

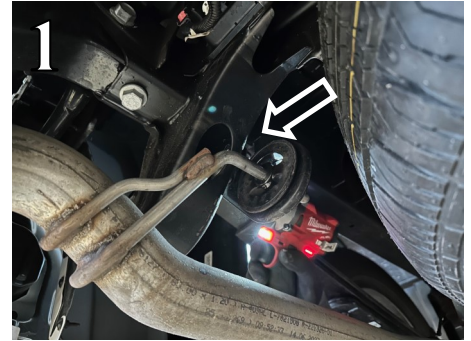
Taking all under car safety precautions, lift the vehicle using a hoist or hydraulic lift. Once this has been done, you may begin the removal of your old exhaust system from your vehicle.

Note: *Before removing the original exhaust system from your vehicle, please compare the parts you have received with the bill of materials provided on the previous page to assure that you have all the parts necessary for the installation of your new Borla Performance Exhaust System.*

Note: *With a used vehicle, we suggest a penetrating spray lubricant to be applied liberally to all exhaust fasteners and allowing a significant period of time for the chemical to lubricate the threads before attempting to disassemble.*

Original Exhaust System Removal

1. Lubricate all hangers, rubber isolators, bolts and nuts.
2. Loosen and remove the hardware from the L/H tailpipe rubber isolator assembly (Fig. 1). Keep hardware for later reinstallation.
3. Loosen and remove hardware from L/H tailpipe flange near the differential (Fig. 2).
4. Remove L/H tailpipe (Fig. 3).
5. Make a cut directly in front of the muffler assembly (Fig. 4).
6. Loosen and remove hardware on R/H tailpipe rubber isolator assembly and remove the assembly from the R/H tailpipe (Fig. 5). Keep hardware for later reinstallation.

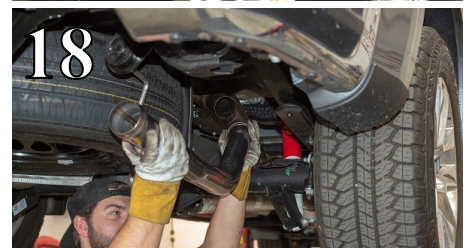
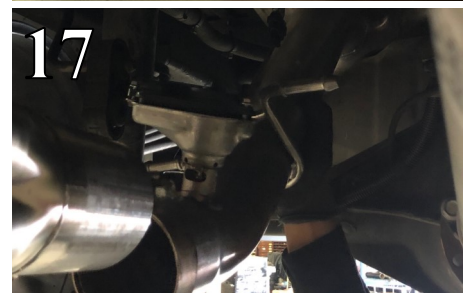


Original Exhaust System Removal Cont'd

7. Disconnect the electrical connector and remove the wiring harness from the bracket (Figs. 6-7).
8. Using a flathead screwdriver or a pry bar, remove the muffler assembly hangers from their rubber isolators (Fig. 8).
9. Using a muffler stand or an additional person, carefully remove the muffler and R/H tailpipe assembly, bringing it towards the front of the vehicle (Figs. 9-10).
10. Loosen the half-moon clamp on the front of the front pipe assembly. Then, using a flathead screwdriver or prybar, remove the front pipe hanger from its rubber isolator and remove the front pipe assembly from the vehicle (Fig. 11). Keep clamp for installation of your Borla system.
11. Loosen and remove the hardware connecting the valve actuator to the muffler assembly, then remove the valve actuator from the assembly (Fig. 12). Keep hardware and actuator for installation on your Borla system.
12. Original exhaust system removed.



Borla Performance Cat-Back™ Exhaust System Installation



1. Orient components on shop floor according to the Borla bill of materials drawings on pages 2-3.
2. While on the shop floor, place a clamp over the expanded end of the **Front Muffler** and insert the inlet to the **Front Pipe Assembly**. Place the original half-moon clamp on the inlet of the **Front Pipe Assembly** and lift the entire **Front Pipe and Front Muffler Assembly** up and into the vehicle to mate with the original exhaust. Insert the hanger into the rubber isolator (Fig. 13). Do not tighten the clamps.
3. **For S-Type and ATAK Systems:** Place a clamp over the expanded end of the **Rear Muffler** or **Polyphonic Harmonizer Assembly** and insert the inlet to the **Front Muffler** (Fig. 14). **Refer to this step for PNs 60679 and 60680.** Do not tighten the clamp.
4. Using original hardware, install the original valve actuator to the simulator assembly on the Borla **Y-Pipe Assembly** (Figs. 15-16). Ensure that the straight portions of the spring lock into the notches on the top portion of the Borla simulator assembly.
5. Place a clamp over the expanded end of the **Y-Pipe Assembly** and insert the inlet to the **Muffler Assembly** (Touring systems), **Rear Muffler Assembly** (S-Type systems), or **Polyphonic Harmonizer Assembly** (ATAK systems). Insert the hangers into their rubber isolators and reconnect the electrical connector to the valve actuator (Fig. 17). Do not tighten the clamp.
6. Not shown: Reinstall the tailpipe rubber isolator assemblies removed during stock removal to their locations on the vehicle.
7. Place a clamp over the expanded end of the **R/H Tailpipe Assembly**, insert the hanger into the original rubber isolator and insert the inlet to the **Y-Pipe Assembly** (Fig. 18). Tailpipe outlet shape may vary from that shown, depending on part number purchased. Do not tighten the clamp.

Borla Performance Cat-Back™ Exhaust System Installation Cont'd

8. Place a clamp over the expanded end of the **Cross-Over Pipe** and insert the inlet to the **Y-Pipe Assembly** (Fig. 19). Do not tighten the clamp.
9. Place a clamp over the expanded end of the **L/H Tailpipe Assembly**, insert the hanger into the original rubber isolator and insert the inlet to the **Cross-Over Pipe** (Fig. 20). Do not tighten the clamp.
10. **140990, 140993, and 140996 only:** Place tailpipe outlets into valance tips (Fig. 21).
11. Once position has been determined to be correct, tighten the Accuseal clamps to 32-35 ft. lbs.
12. Before starting your vehicle, make sure to check all wires, hoses, brake lines, body parts and tires for safe clearance from the exhaust system.
13. Start the vehicle and check for any leaks. If any leaks are found, determine cause (such as loose or incorrectly positioned clamp) and repair as necessary.

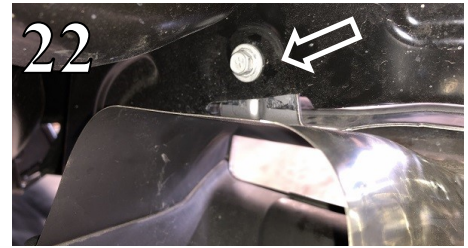


WARNING: Use extreme caution during installation. Torque all fasteners according to manufacturer's torque values and tightening sequence. **DO NOT** use air impact tools to tighten fasteners on Borla Performance Exhaust Systems. Use of such tools may result in bent flanges or gasket contact areas leading to exhaust leaks.

NOTE: When you first start your vehicle after the installation of your new Borla Performance Exhaust System, there may be some smoke and fumes coming from the system. This is a protective oil based coating used in the manufacturing of mandrel bent performance exhaust tubing. This is not a problem and will disappear within a very short period of time after the exhaust has reached normal operating temperatures.

Borla Performance Cat-Back™ Exhaust System Installation: 140991BC/CFBA, 140992, 140994BC/CFBA, 140995, 140997BC/ CFBA, 140998 Quad-Tip Systems

1. Loosen and remove the pictured hardware on the L/H and R/H valance tips (Figs. 22-24).
2. The bolt pictured in Fig. 22 may require an air wrench to remove due to limited clearance.
3. Valance tip removed (Fig. 25).
4. Place a **Half-Moon Clamp** on the outlet of the **R/H Tailpipe Assembly**. Mate the **Tip Assembly** to the **R/H Tailpipe Assembly** and snug the clamp (Figs. 25-26).
5. Repeat step 4 for **L/H Tailpipe Assembly** and **Tip Assembly**.
6. Please note that you may rotate and adjust the tip assemblies for optimal fitment.
7. Once position has been determined to be correct, tighten the Accuseal clamps to 32-35 ft. lbs.
8. Before starting your vehicle, make sure to check all wires, hoses, brake lines, body parts and tires for safe clearance from the exhaust system.
9. Start the vehicle and check for any leaks. If any leaks are found, determine cause (such as loose or incorrectly positioned clamp) and repair as necessary.



WARNING: Use extreme caution during installation. Torque all fasteners according to manufacturer's torque values and tightening sequence. **DO NOT** use air impact tools to tighten fasteners on Borla Performance Exhaust Systems. Use of such tools may result in bent flanges or gasket contact areas leading to exhaust leaks.

NOTE: When you first start your vehicle after the installation of your new Borla Performance Exhaust System, there may be some smoke and fumes coming from the system. This is a protective oil based coating used in the manufacturing of mandrel bent performance exhaust tubing. This is not a problem and will disappear within a very short period of time after the exhaust has reached normal operating temperatures.